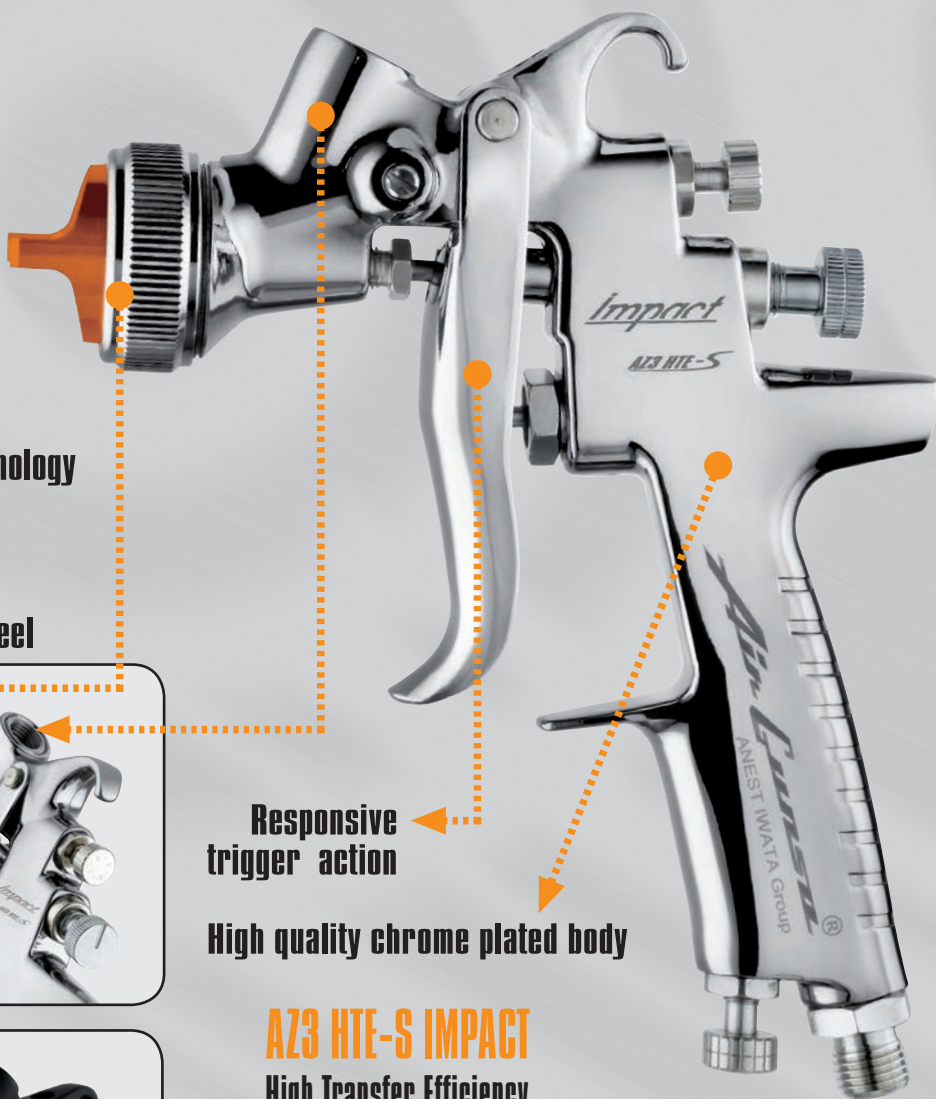
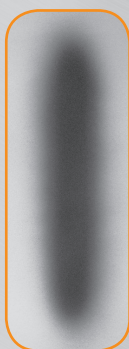


# Impact

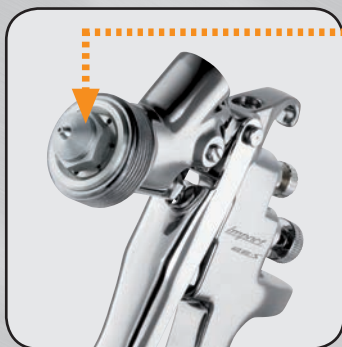
## AZ3 HTE-S

# A NEW MILESTONE FROM AIR GUNSA



**NEW HTE-S high performance spray technology**  
Homogeneous and fine atomization  
with all modern WB and HS coatings.

**Parts in contact with fluid in stainless steel**



**Responsive trigger action**

**High quality chrome plated body**

**BLACK  
BODY  
LIMITED EDITION**



**AZ3 HTE-S IMPACT**  
High Transfer Efficiency

Model	ø mm	No.	bar	ml/min	Nl/min	mm	
AZ3 HTE-S IMPACT	1.2	HTE-S2	2.0 - 2.5	250	375	19	
	1.3			275		210	
	1.4			290		230	
	1.6	300		230			
	1.6	HTE-S2		315		362	250
	2.0	330		270			

CE II 2 GX

declaration of ATEX conformity for use in zone 1 and in zone 2

Air nipple: G 1/4" M - Fluid nipple: G 1/4" F

At an air inlet pressure of 2.5 bar