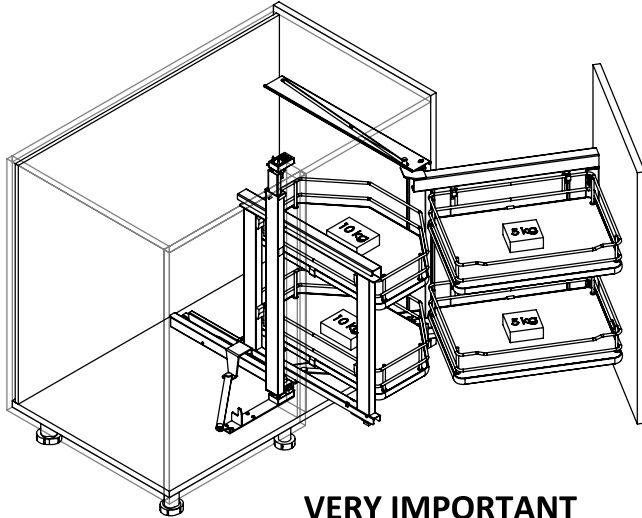


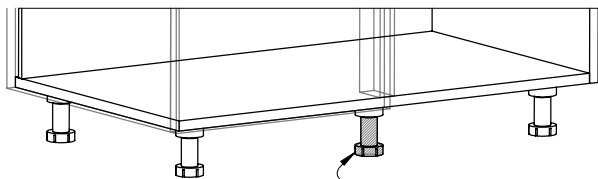
# 542.00.703

For Right Side Door Operation

All Dimensions are in mm



**VERY IMPORTANT**



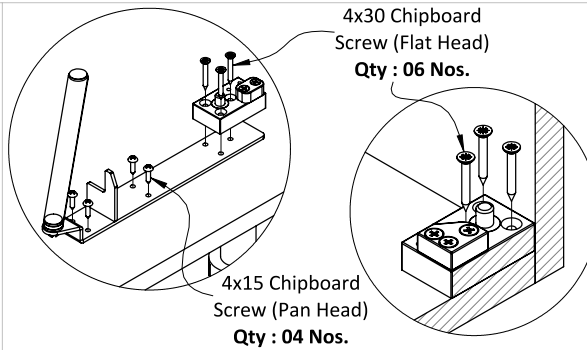
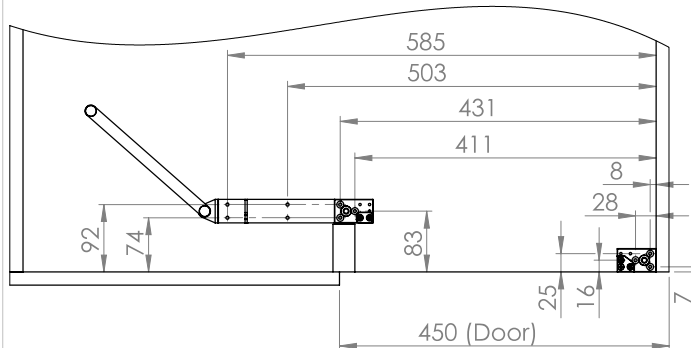
Extra cabinet leg Recommended

No	Minimum Internal Cabinet Dimensions	
01	Width	864
02	Depth	495
03	Height	645

## Step No: 01

Fastner in Packet No:01

\* Bottom Mounting Part Fixing



4x30 Chipboard Screw (Flat Head)

Qty : 06 Nos.

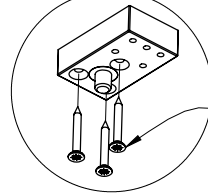
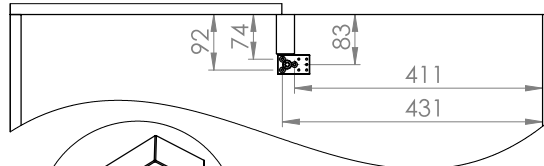
4x15 Chipboard Screw (Pan Head)

Qty : 04 Nos.

## Step No: 02

Fastner in Packet No:01

\* Top Mounting Part Fixing

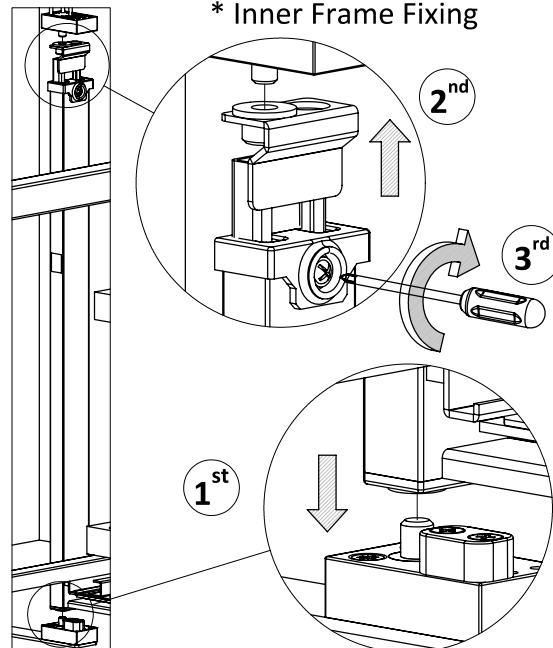


4x30 Chipboard Screw (Flat Head)

Qty : 03 Nos.

## Step No: 03

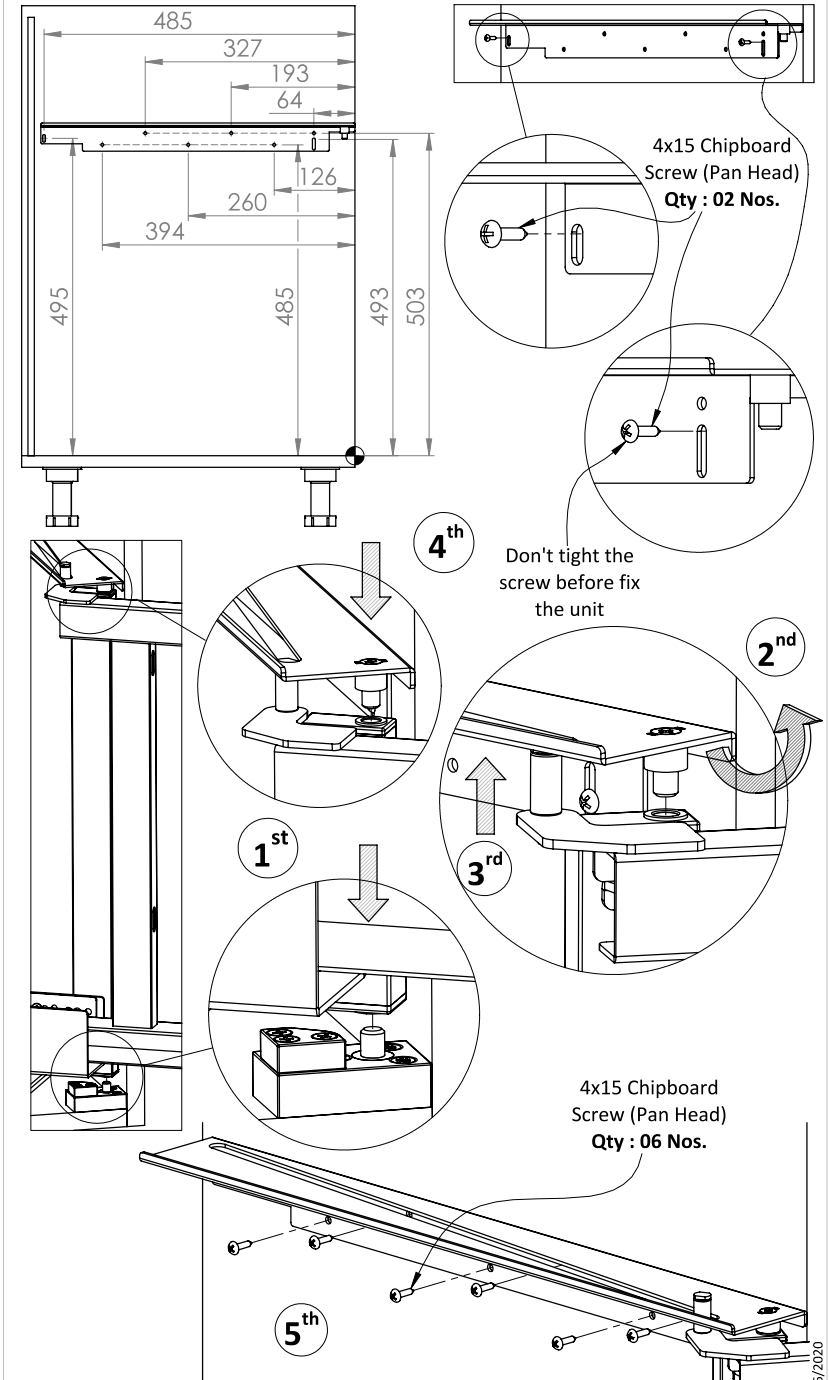
\* Inner Frame Fixing



## Step No: 04

Fastner in Packet No:01

\* Pullout Frame Fixing



4x15 Chipboard Screw (Pan Head)

Qty : 02 Nos.

4<sup>th</sup>

Don't tight the screw before fix the unit

2<sup>nd</sup>

1<sup>st</sup>

3<sup>rd</sup>

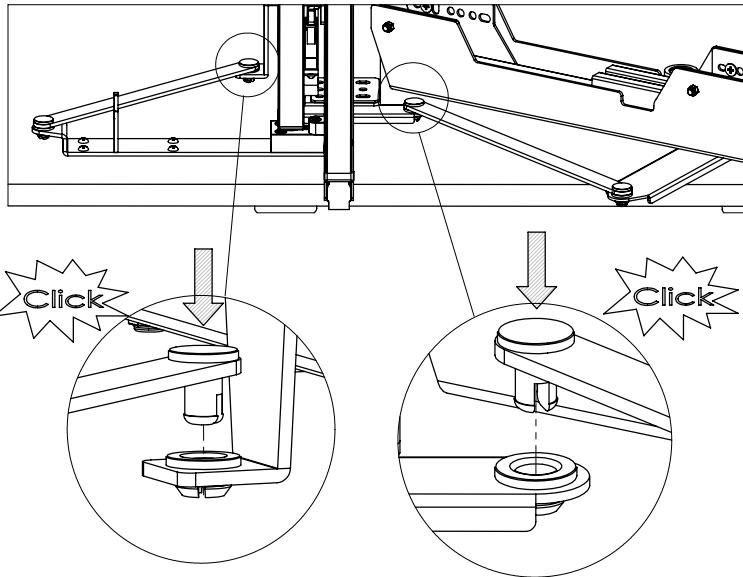
1<sup>st</sup>

5<sup>th</sup>

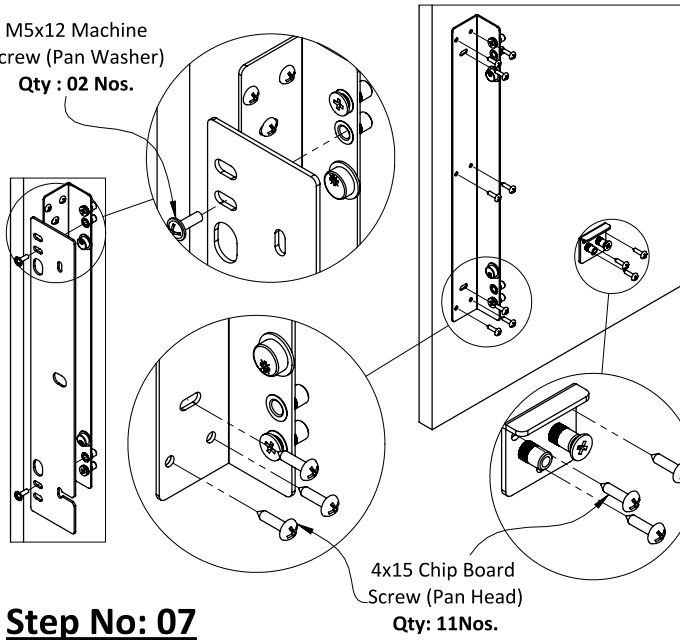
4x15 Chipboard Screw (Pan Head)

Qty : 06 Nos.

**Step No: 05** \* Connecting Arms Fixing



M5x12 Machine Screw (Pan Washer)  
Qty : 02 Nos.



**Step No: 07**

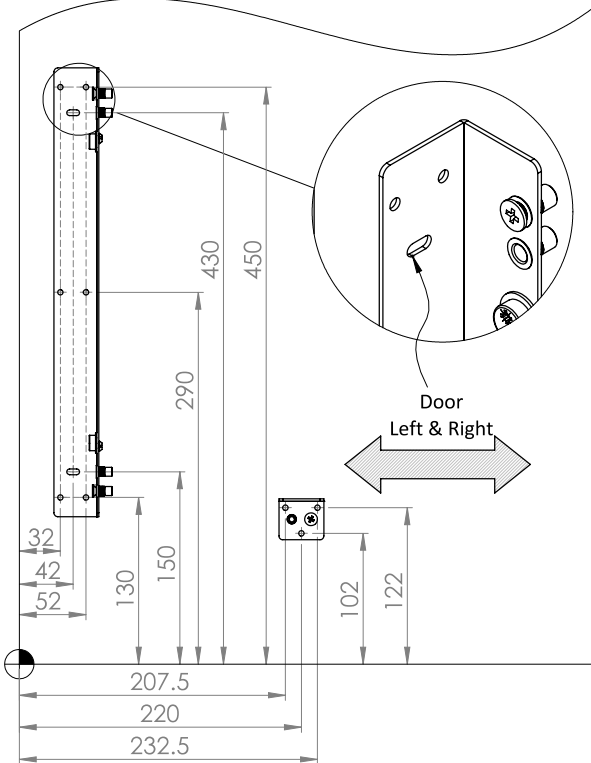
Fastner in Packet No:02

\* Door Fixing

**Step No: 06**

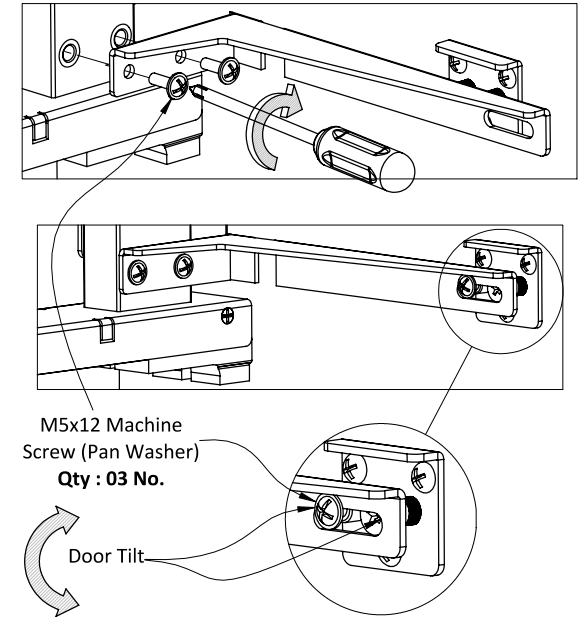
Fastner in Packet No:02

\* Door Bracket Parts Fixing



**Step No: 08** \* Door Connecting Arm Fixing

Fastner in Packet No:02



**Step No: 09**

Fastner in Packet No:03

\* Baskets Fixing

